

Selected works by International artists

**originally in the PELMAMA Permanent Art Collection donated to the South African National
Gallery, Cape Town**

in 2008 or earlier, per

<http://www.pelmama.org/SANationalGallery.htm>

ALBERS, Josef

“DRA”, 1968 – serigraph XXII

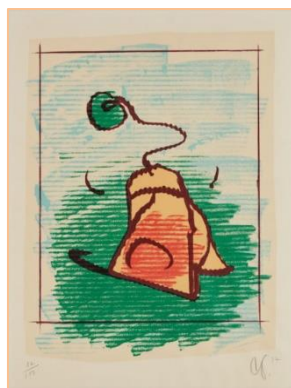
Originally donated to PELMAMA by the Josef Albers Foundation

“DRB”, 1968 – serigraph XXV

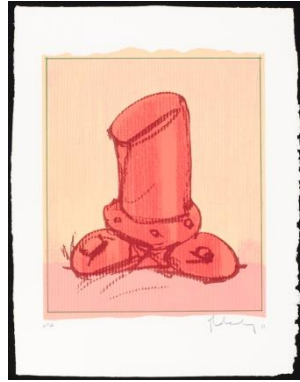
Originally donated to PELMAMA by Anni Albers, Orange CT

<https://albersfoundation.org/>

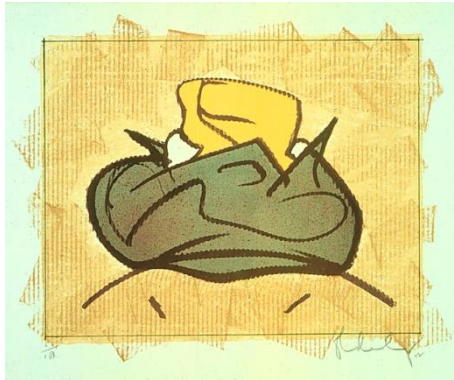
OLDENBURG, Claes



“Tea Bag”, 1972 – 7-col litho - 70/100 – 79x58 cm



“Soft fireplug, inverted”, 1972 – 8-col litho - 31/100 – 103x78 cm



“Baked Potato with butter, 1972 – 8-col litho - 65/100 – 78x103 cm

Published by Petersburg Press, London, exhibited at Gallery 21, Hyde Park, Johannesburg - 1974

ROSENQUIST, James

“Flower Garden”, 1973 – 10-col litho – 57/75 – 56x73 cm



Published by Petersburg Press, London, exhibited at Gallery 21, Hyde Park, Johannesburg - 1974



"Push buttons", 1973 – 3-col litho – 57/75 – 54x69 cm

Published by Petersburg Press, London, exhibited at Gallery 21, Hyde Park, Johannesburg - 1974

CALDERARA, Antonio



"Variazioni cromatiche positivo-negativo", 1971 – serigraphy on wood - ed. 50 – 100x90 cm, each element framed in groups of 6 ea. 81x9x2 cm

<http://www.fondazionecalderara.it/>

Addendum to:

http://www.pelmama.org/PELMAMA_p1_contents.htm#museums

Uploaded 1st June, 2020