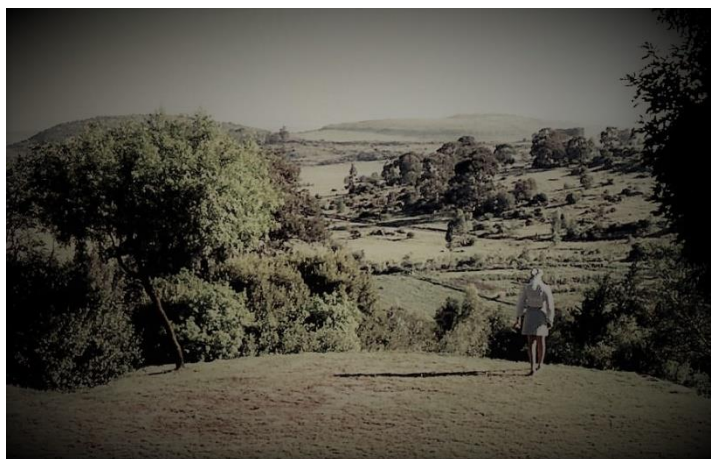


## ***FLORA FARM – Marquard - The Nicholson Connection***

---



***St Francis on the Hill, Flora – 1968 (img Reg Nicholson)***



***View from Flora House towards North – 1967***



***Flora House – 1973 (from “A snapshot of Flora and family”) (archives Frances Edwards 2011)***



***Gordon and Betty Nicholson-Edelsten – mid-1960s (img Ava Nicholson)***



***Bringing cattle home after milking – 1971***



***Flora farm workers awaiting traditional Christmas presents – December 1967***





*Flora – cow shelter near dairy – December 1969*



*Flora – the calf hotel – December, 1969*



*Flora – new pigsties between main house and dairy – 1969*



*View of lower dam and Flora factory from hill above Florette – 1967*

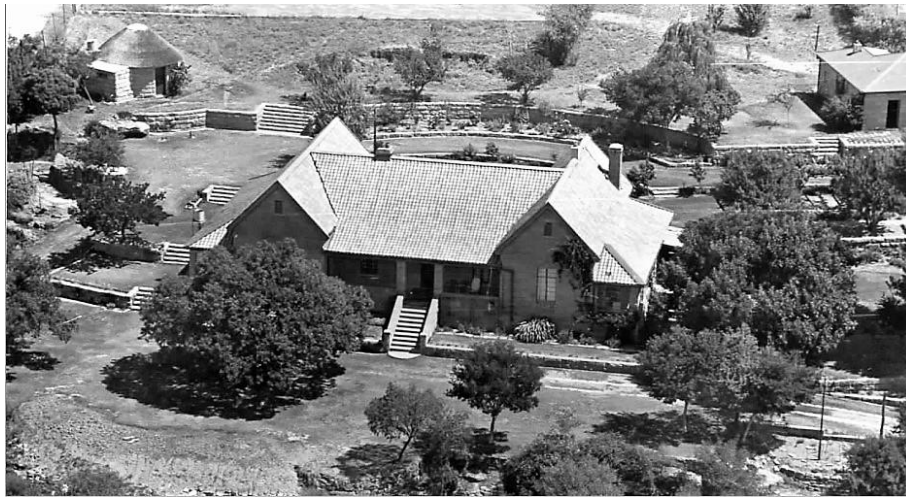


*Flora – view from main house onto factory dam – 1973*



*Flora rondavel – 1973*





*Two aerial views of Flora farm house taken by a company in Bethlehem in Nov. 1973 (img Ava Nicholson)*



*Bucklands adjoining Flora*

### ***Interesting facts***

***Maluti fortified mealie meal, condensed milk, full and skimmed milk powder were produced by the Flora Dried Milk Company Ltd on the adjoining property sold by Gordon Nicholson to Senekal Co-Op Dairies in 1970***



***Flora farm factory and factory houses, April 1974 (img J + V Wright)***



***Flora farm poultry houses (front) – St Francis on the Hill and first village at back (img J + V Wright)***



*Flora farm – the milking shed and cooling tower – snow on roof of rondavel (img Ava Nicholson)*



*St Francis on the Hill, Flora – 1968 (img Reg Nicholson)*

---

[The Flora Nicholson clan by Lar Frost 2010](#)

*This document is presented by The Haenggi Foundation Inc. – December, 2018*

[https://art-archives-southafrica.com/About\\_us](https://art-archives-southafrica.com/About_us)

*See also*

[http://za-ch-art-kunst.ch/ARTLinks/CMH\\_CVbrief.htm](http://za-ch-art-kunst.ch/ARTLinks/CMH_CVbrief.htm)

*Images, unless marked otherwise, archives FFH*