

FLORA FARM – Marquard - The Barry Connection

Where it all started

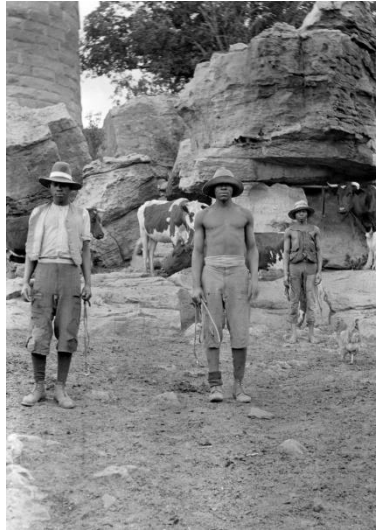


Flora – Herbert Nicholson, Agga Nicholson née Barry and Betty Nicholson – 8th November, 1912

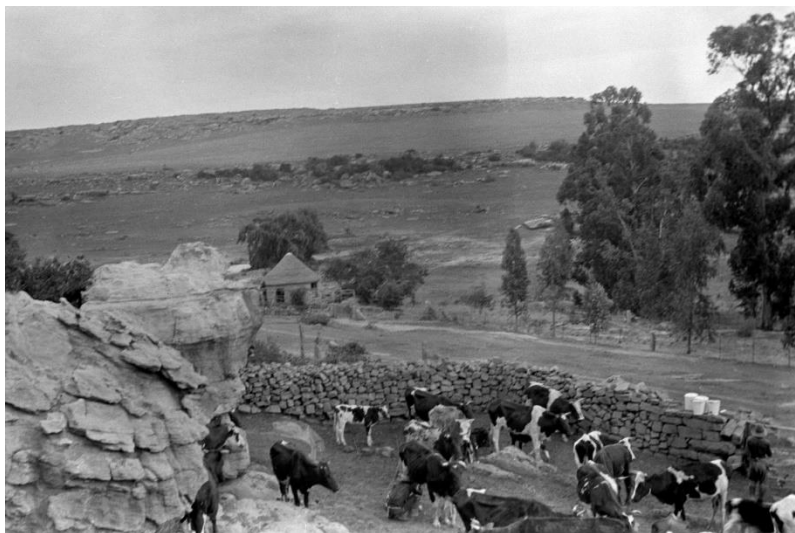
(Image taken 4 years after Herbert Nicholson bought Flora from the Schutte family in 1908)



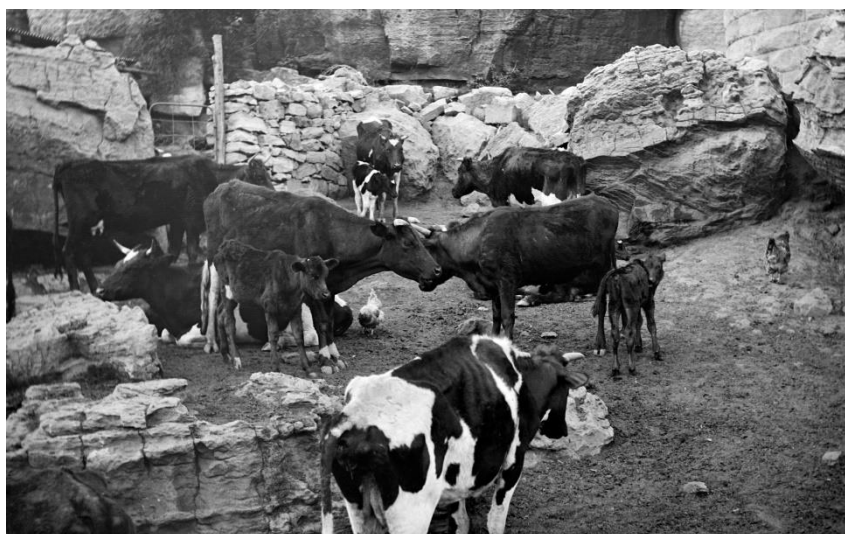
Flora – Gordon Nicholson – in 1912



Flora – Cattle Kraal – November, 1912



Flora – Cattle Kraal 2 - November, 1912



Flora – Cattle Kraal 3 – November, 1912



Flora House – abt. 1939



Flora – Herbert Nicholson's extended family – abt. 1939



Flora – Rondavels – abt. 1939



Flora – Herbert Nicholson – abt. 1939



Flora – Agga Nicholson née Barry – May, 1941 (image taken at Schoongezicht)



Flora House – May, 1937



Flora – Elizabeth Pauline (Betty) (1908-1964), Herbert (1877-1957), Agnes Gabrielle née Barry (Agga) (1881-1955), Gordon (1911-1988) with his favourite dog, a red setter – May, 1937



Flora – mealie harvest – May, 1937



Flora – Chicken house with Agga – May, 1937



Flora – Herbert Nicholson feeding the Rhode Island Reds – May, 1937



Flora – Sow with her piglets - 1939



Flora – some of the domestic staff – abt. 1939

More on this period at Flora

[*The Flora Nicholsons by Lar Frost*](#)

[*Flora Farm - The Nicholson Connection*](#)

This document is presented by The Haenggi Foundation Inc. – 30th September, 2019

[*https://art-archives-southafrica.com/About_us*](https://art-archives-southafrica.com/About_us)

*Images © Richard Alan Barry (Agga's brother) from the archives of Adrian Doyle, Australia – 2019,
with thanks to Mike Coke*